



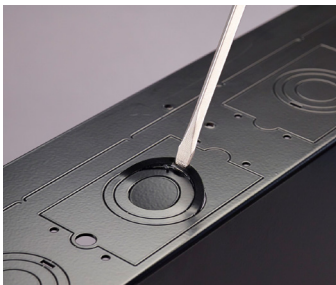
PAC525 Series cutaway with white flange and cover.

Simplified Box Design for In-Wall Power and Data Applications

The PAC525 Series Wall Boxes by Chief offer access to A/V, Power and Data applications in a simplified design for use behind flat-screen TVs. With knockouts for single-gang outlets and conduit, this box is ideal for retrofit or new build applications to provide an organized, recessed space for routing excess cables and for attaching surge protectors/power conditioners. The PAC525 Series works with a variety of Chief wall mounts, giving a clean installation and superior user experience.

Features & Benefits

- **Multiple Depth Compatibility:** Easily change box depth for 3.5" or 2.5" stud bays (89 or 64 mm) with break way edges.
- **Flexible Mounting:** Stud mountable and can be mounted to drywall with the flange configurations.
- **Easy Knockouts:** Knockouts around box for single-gang outlets and 1-1/4", 1" & 1/2" conduit to meet specific needs on site. Cover knockouts for cable routing, ventilation and tamper proof security.
- **Simple Design:** Black or white flanges and covers, paintable to blend with any environment.
- **Equipment Mounting:** Enclosure UL 2416 listed for installation of AV, IT & Communication Technology Equipment, so it is rated to store a variety of AV components.
- **Integrated Cable Management:** Box features integrated universal zip tie anchor points for cable management.
- **Compatible with Chief wall mounts:** Works seamlessly with the PST, PRO, MSR, MTR, MWH, MWR, PWRm PNR, PDR, Thinstall and FUSION wall mounts.



Easy Knockouts



Zip Tie Anchor Points



Break Away Edges



Drywall or Stud Mountable

Vertical Markets

- Commercial
- Education
- Healthcare
- Hospitality
- Entertainment
- Retail

Compliance



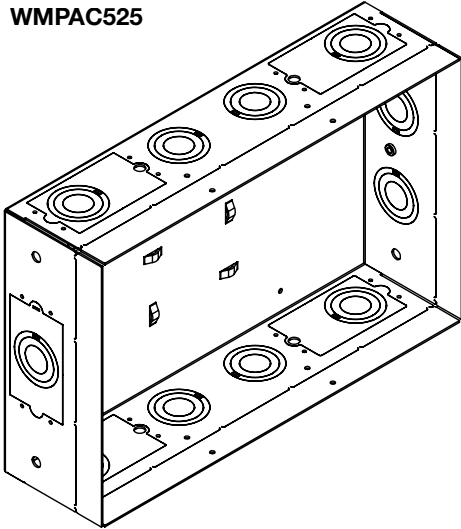
cULus Listed, Audio/Video, Information and Communication Technology Equipment Cabinet, Enclosure and Rack Systems, File Number E309432, Guide NWIN

WMPAC525 Series Wall Box Ordering Information

Catalog No./Item

Description / Specifications

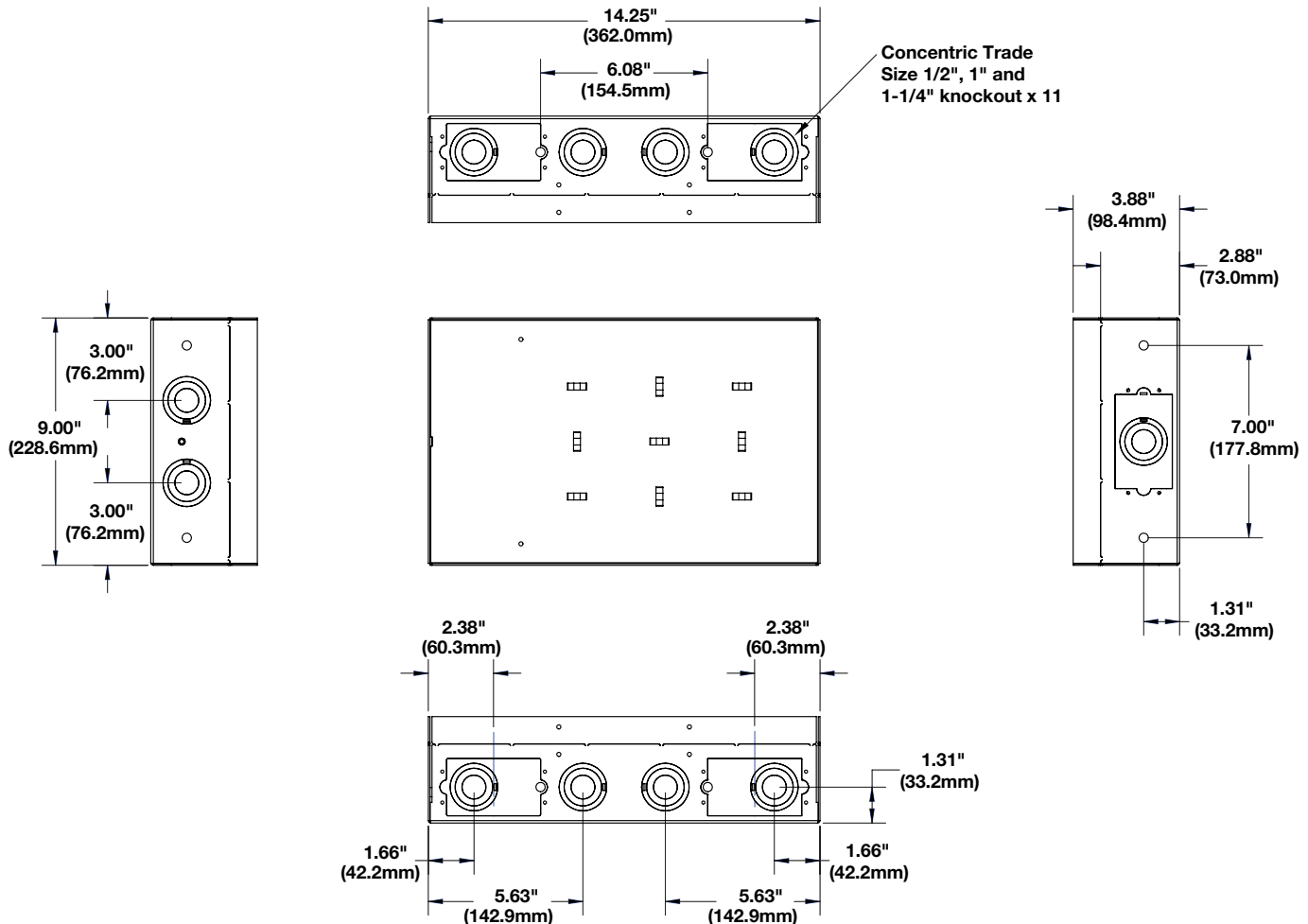
WMPAC525



In-Wall Box – Designed to be mounted to a 2" x 4" [51mm x 102mm] wood stud wall 16" on center or 2" x 4" -25ga (minimum) steel studs. The box has a total of five (5) 1-gang knockout locations for mounting AC outlets and eleven (11) trade size conduit knockouts for additional cabling needs. The breakaway edges allow the box's depth to be easily changed in the field for 3.5" or 2.5" stud bays.

Country of Origin: China

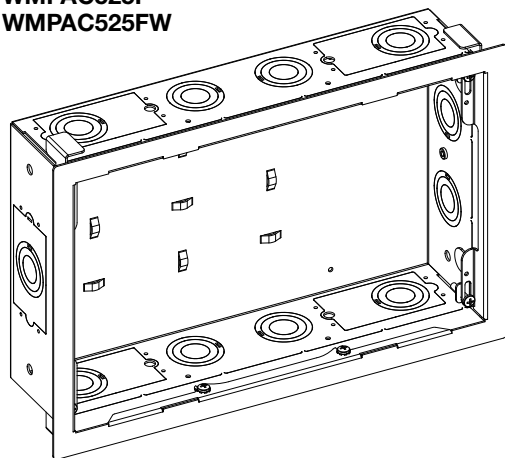
WMPAC525 Series Wall Box Dimensions: 9" x 14.25" x 3.9"



WMPAC525 Series Wall Box Ordering Information

Catalog No./Item

WMPAC525F
WMPAC525FW

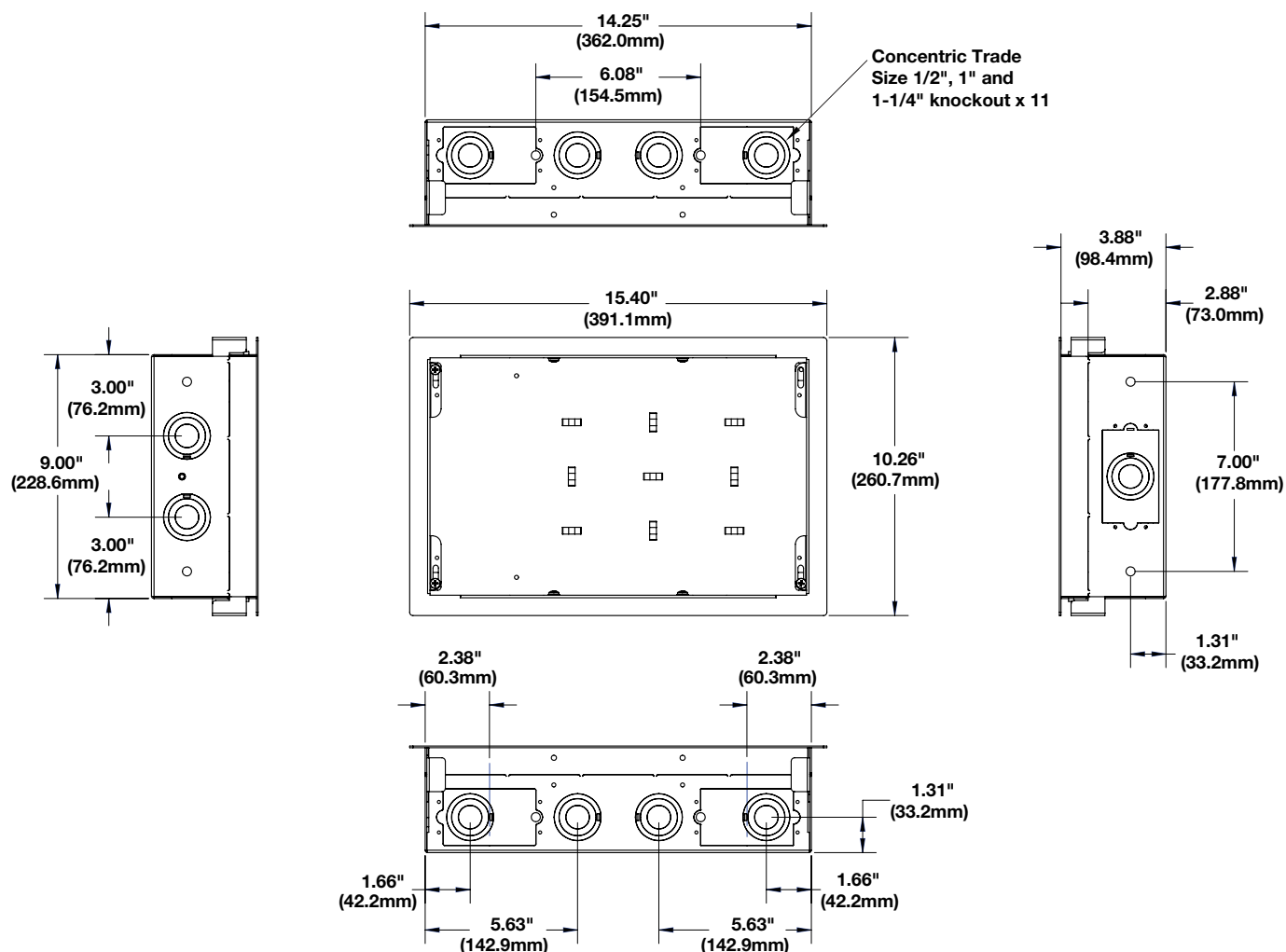


Description / Specifications

In-Wall Box with Flange – Designed to be mounted to a 2" x 4" [51mm x 102mm] wood stud wall 16" on center, a 2" x 4" -25ga (minimum) steel studs, or to a minimum ½" thickness drywall surface. The box has a total of five (5) 1-gang knockout locations for mounting AC outlets and eleven (11) trade size conduit knockouts for additional cabling needs. The breakaway edges allow the box's depth to be easily changed in the field for 3.5" or 2.5" stud bays. This configuration includes a paintable flange in either black or white (W).

Country of Origin: China

WMPAC525F/FW Series Wall Box Dimensions: 9" x 14.25" x 3.9"

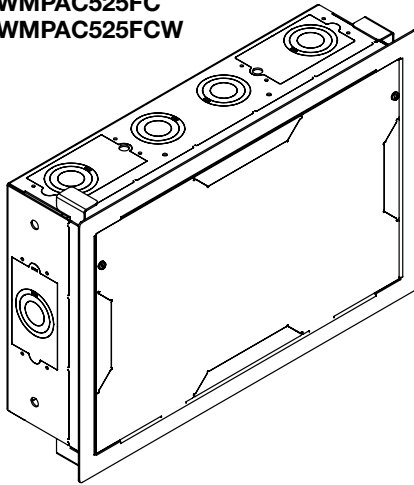


WMPAC525 Series Wall Box Ordering Information

Catalog No./Item

Description / Specifications

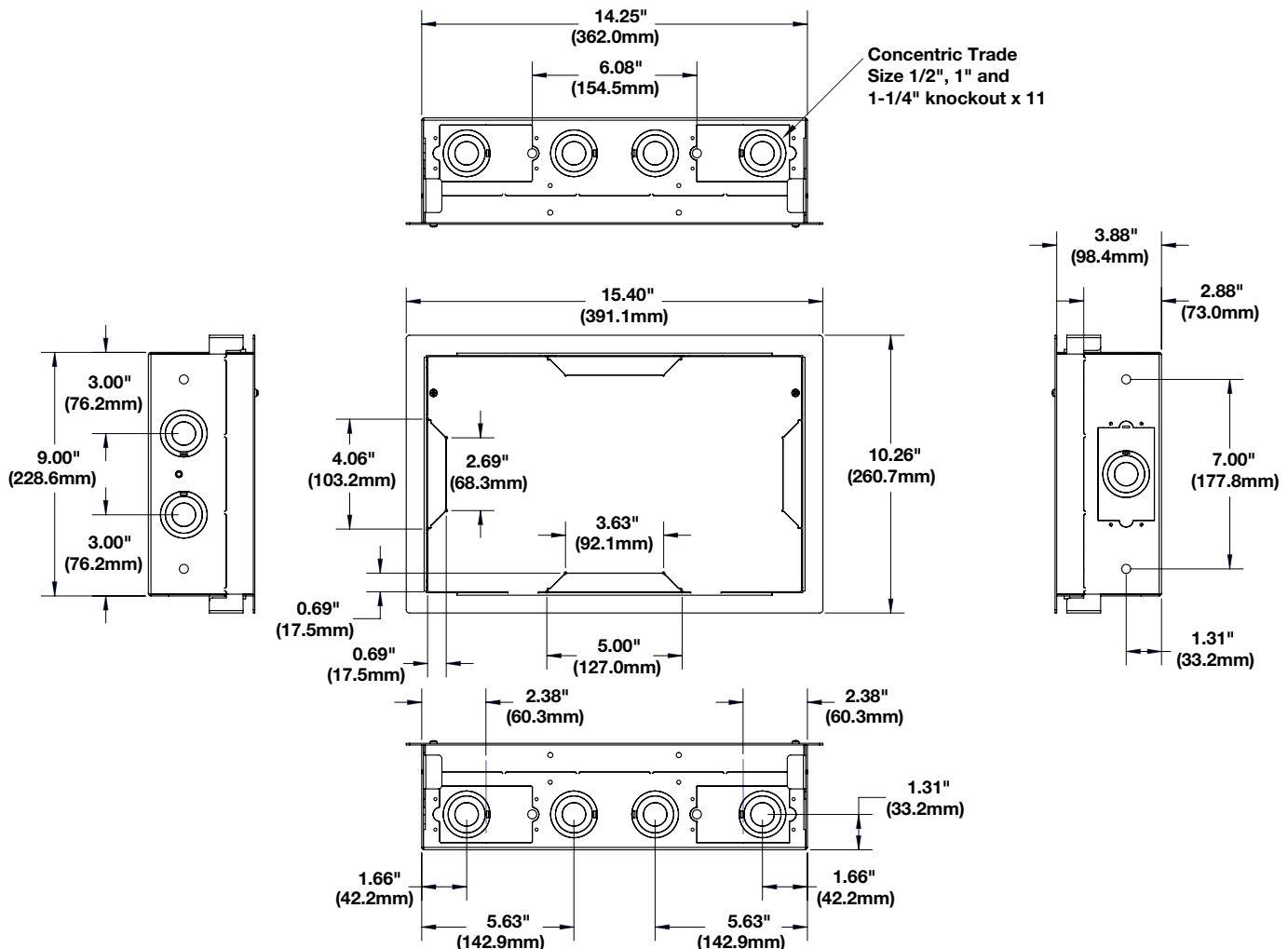
WMPAC525FC
WMPAC525FCW



In-Wall Box with Flange and Cover – Designed to be mounted to a 2" x 4" [51mm x 102mm] wood stud wall 16" on center, a 2" x 4" -25ga (minimum) steel studs, or to a minimum ½" thickness drywall surface. The box has a total of five (5) 1-gang knockout locations for mounting AC outlets and eleven (11) trade size conduit knockouts for additional cabling needs. The breakaway edges allow the box's depth to be easily changed in the field for 3.5" or 2.5" stud bays. This configuration includes a paintable flange and cover in either black or white (W).

Country of Origin: China

WMPAC525FC/FCW Series Wall Box Dimensions: 9" x 14.25" x 3.9"





WIREMOLD®

PAC525 Series Wall Boxes by Chief®



Electrical Wiring Systems

60 Woodlawn Street
West Hartford, CT 06110
1.877.BY.LEGRAND (295.3472)
www.legrand.us

Canada

1.800.723.5175; 905.738.9195
www.legrand.ca

CS3050 — Updated March 2020 — For latest specs, visit www.legrand.us/wiremold

© Copyright 2020 Legrand All Rights Reserved

